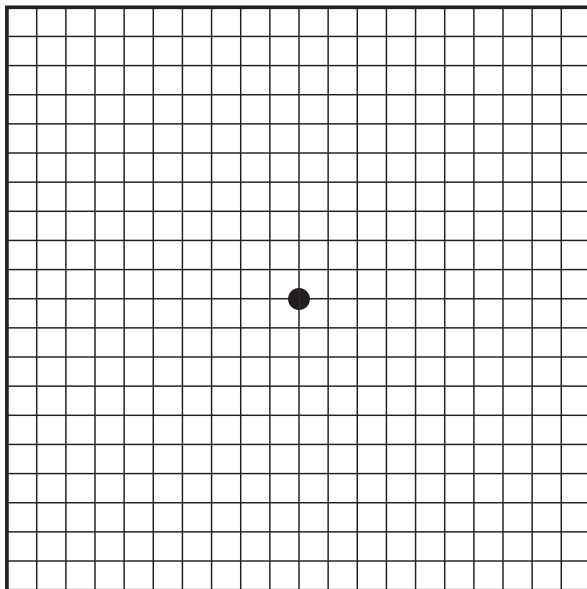


PLACE THIS AMSLER GRID WHERE YOU CAN CHECK IT REGULARLY.



THE HORIZONTAL AND VERTICAL LINES ON THIS GRID SHOULD APPEAR STRAIGHT.

When using this grid, you should keep the following in mind:

- Wear your glasses or contacts if applicable
- Keep the grid about half an arm's length away from your face
- Test each eye separately by covering 1 eye at a time
- Look directly at the dot in the center of the grid
- Be sure you have adequate lighting
- Do not stare at the grid for long periods of time

If the lines appear wavy or blurry, please contact me at:
